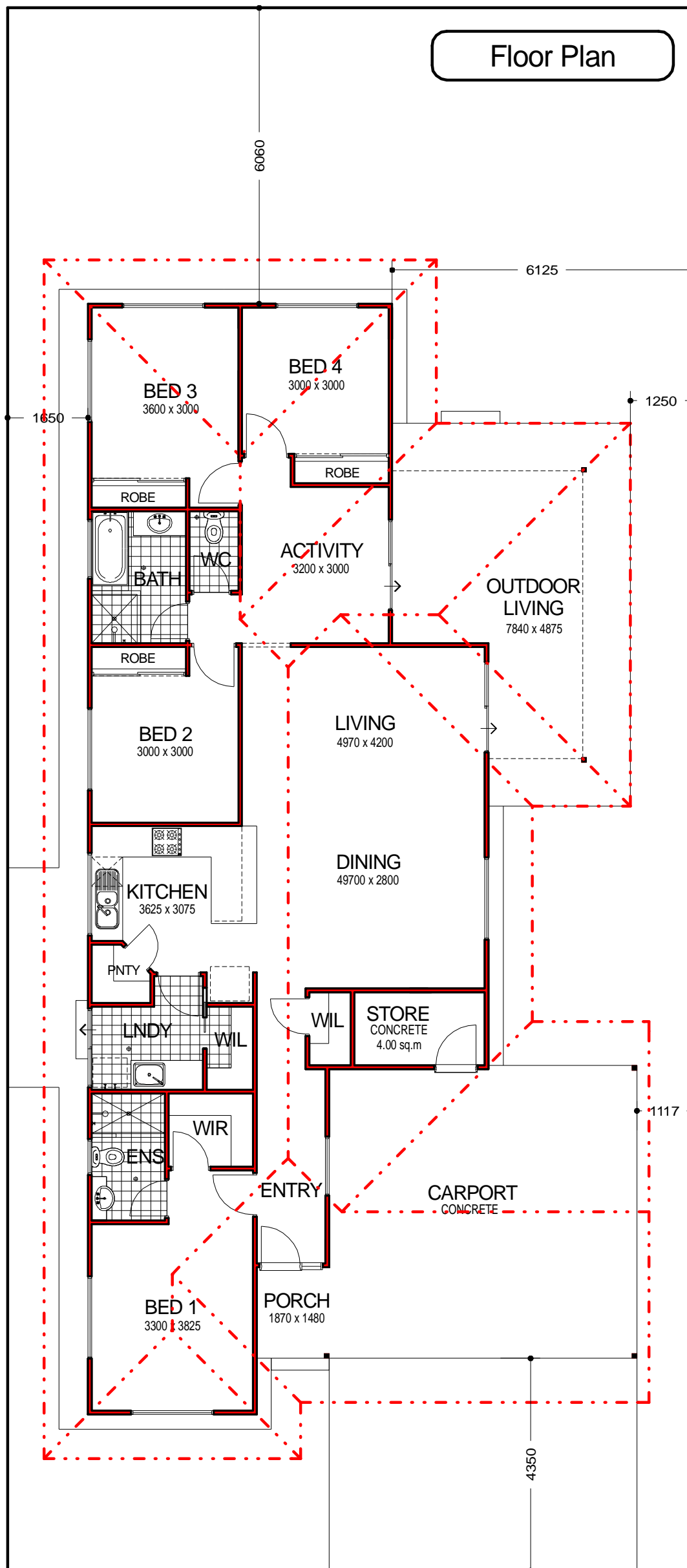


Floor Plan



The Enclave "Amherst"

- Features Include:
- over 215sqm total house area
 - 4 huge bedrooms
 - open plan living
 - additional living / activity room
 - ideal for investors or owner occupiers
 - suitable for
- Lots 119-125 Starboard Entrance

Price includes full CWD Standard Specification

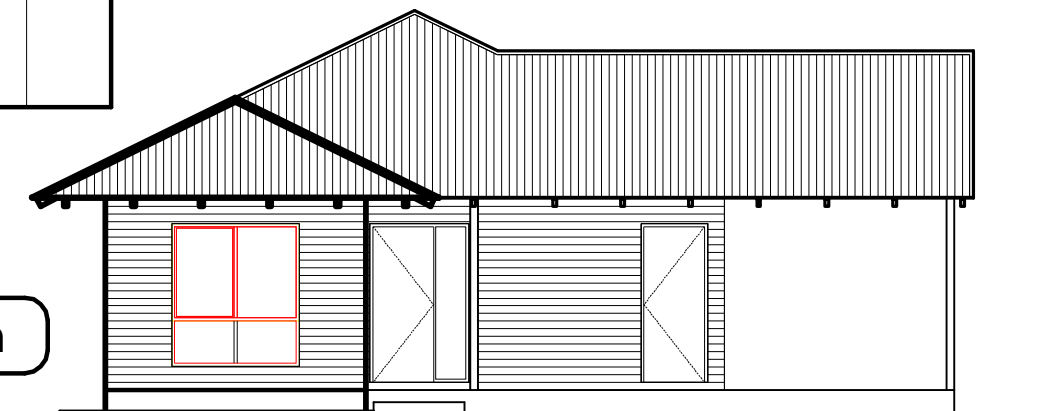
Turnkey options available

Other designs available

House Price from \$488,600**

House and Land Price from \$775,600**

Front Elevation



**CONDITIONS APPLY

SUBJECT TO FINAL APPROVED PLANNING REQUIREMENTS



DESIGN & SALES ENQUIRIES:
 Paul Hope
 Tel: 0418 904 704
 Email: paul@cwdaust.com.au
 Website: www.cwdaust.com.au

AREAS:
 House = 145.19m²
 Outdoor Living = 31.65m²
 Porch = 2.77m²
 Carport = 37.54m²
 TOTAL AREA = 217.15m²

© Copyright Colin Wilkinson Developments
 HEAD OFFICE:
 PO BOX 3112
 Broome WA 6725
 Tel: 08 9193 7444
 Fax: 08 9193 7456