

\*\*CONDITIONS APPLY

SUBJECT TO FINAL APPROVED  
PLANNING REQUIREMENTS

# The Enclave "Elvire 4x2"

## Features Include:

- over 200sqm total house area
- 4 huge bedrooms
- open plan living
- ideal for investors or owner occupiers
- suitable for Lots 138-149 Cabin Rd

Price includes full CWD Standard Specification

Turnkey options available

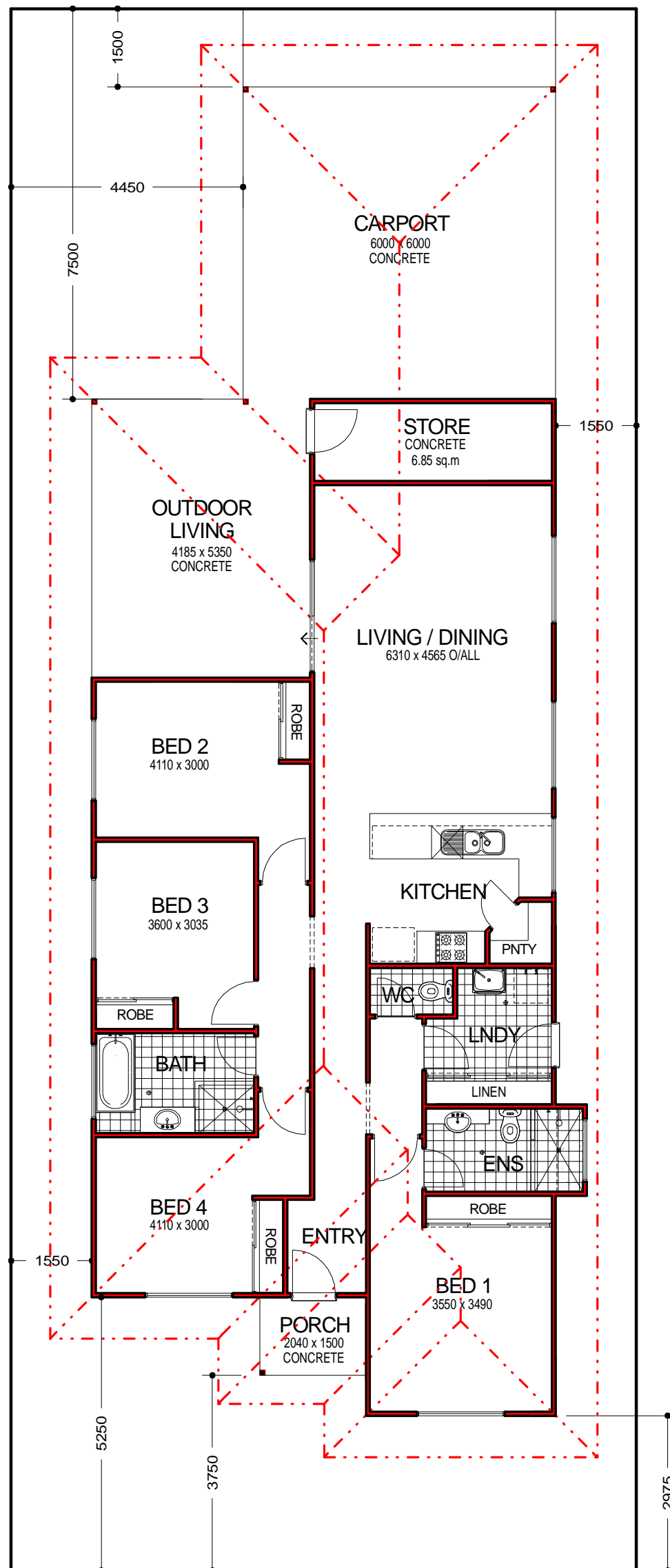
Other designs available

**House Price from \$473,700\*\***

**House and Land Price from \$718,980\*\***



Front Elevation



Floor Plan



DESIGN & SALES ENQUIRIES:  
 Paul Hope  
 Tel: 0418 904 704  
 Email: paul@cwdaust.com.au  
 Website: www.cwdaust.com.au

AREAS:  
 House = 140.67m<sup>2</sup>  
 Outdoor Living / V'dah = 22.39m<sup>2</sup>  
 Porch = 3.05m<sup>2</sup>  
 Carport = 36.00m<sup>2</sup>  
 TOTAL AREA = 202.11m<sup>2</sup>

© Copyright Colin Wilkinson Developments  
 HEAD OFFICE:  
 PO BOX 3112  
 Broome WA 6725  
 Tel: 08 9193 7444  
 Fax: 08 9193 7456